

|||||

CASCO BAY ARTISANS

|||||

INTERNATIONAL FINE ART GALLERY

Light & Form

Glass, Porcelain, Steel, & Stone at Casco Bay Artisans



CASCO BAY ARTISANS

INTERNATIONAL FINE ART GALLERY

As we head into the shadows of winter and the warmth of the holiday season, Casco Bay Artisans is featuring the works of artists that you can hold in your hands and change with shifting light. Featuring glass artists from Maine to Seattle and sculpture that traces the movement of water and electromagnetic fields, this show celebrates both the seen and unseen in our world, those forms that unfold in light and shadow.

Featured Artists:

Pat Campbell | Julia Doughty | Ray Gross | David Huchtausen
Pino Mascia | Robin Mix | Andrea Mulcahy | Ronnie Phillips | Richard Satava
Seattle Glass Works | Jan Royall | Maya Travaglia

For inquiries into the works or any other information, please contact:

Jennifer Swarts
Gallery Owner
jen@cascobayartisans.com

Jess Lauren Lipton
Marketing Director
CBArtMarketing@gmail.com

CASCO BAY ARTISANS

INTERNATIONAL FINE ART GALLERY

David Huchtausen

David Huchthausen is one of an elite group of artists who have impacted the history of contemporary art. As a Sculptor, Fulbright Scholar, University Professor and Museum Consultant, his achievements over the past 35 years have played a vital role in the evolution of glass into a fine art form. Huchthausen's widely publicized work is included in the permanent collections of 60 major museums worldwide including the Metropolitan Museum in New York, The Smithsonian in Washington D.C., the Hokkaido Museum in Sapporo, Japan and the Museum of Fine Art in Dusseldorf, Germany.

Ferdinand Hampson - Habatat Galleries



David Huchtausen
Hand-sculpted and Hand Blown
Glass Sphere
8" Diameter
\$18,000

CASCO BAY ARTISANS

INTERNATIONAL FINE ART GALLERY



David Huchtausen
Hand-sculpted and Hand Blown
Glass Sphere
8" Diameter
\$18,000

CASCO BAY ARTISANS

INTERNATIONAL FINE ART GALLERY

Robin Mix

Robin designs and produces, by hand, every piece of glass. The breadth of his passion for glass demands that he makes his own color. Few glass artists go to this extent. Most purchase standard color materials. Instead, Robin utilizes the old glass formulas he has studied for many years and maintains his own color recipes. Therefore, you will find colors in his pieces that are only available to his work. He also produces his own murrini and flat cane. Despite his recognizable work, Robin refuses to take himself too seriously. His self-proclaimed stubbornness reflects in his commitment to the art, but his passion for the medium makes him a willing conversationalist on the subject. This honest dedication results in a style of decorative glass that is not just ornamental; each piece stands out individually in its function and its representation of mastery and genuine innovation.



Robin Mix
End of Day Series
Blown Glass
6"x8"x3"
\$660

CASCO BAY ARTISANS

INTERNATIONAL FINE ART GALLERY



Robin Mix
Hunderwasser Series
Blown Glass
6.5"x8.5"x4"
\$825



Robin Mix
Hunderwasser Series
Blown Glass
4" round x 11.5"
\$1,705

CASCO BAY ARTISANS

INTERNATIONAL FINE ART GALLERY



Robin Mix
Hunderwasser Series
Blown Glass
7"x10.5"x7"
\$1,705



Robin Mix
Crazy Quilt Series
Blown Glass
6.5"x7.5"x3"
\$660

CASCO BAY ARTISANS

INTERNATIONAL FINE ART GALLERY



Robin Mix
Crazy Quilt Series
Blown Glass
8"x13"x4"
\$1,320

CASCO BAY ARTISANS

INTERNATIONAL FINE ART GALLERY

Ronnie Philips

Ronnie Phillips was born in Western Kentucky in July of 1989. Early influences of art came from his great grandmother, who began teaching him to draw (and color) during his early formative years. Concepts of perspective were taught to create realistic sketches of homes and landscapes, providing a strong foundation for the creative mind.

Without realizing it, the Globes have emerged through the development of a continuous idea for over 5 years now. The earliest renditions of them were always black and white, testing both sculptural and functional forms. The steadfast attribute has been the cane, which has become softer much like the wisp of a faint cloud or the soft glow of the milky way on a clear night. It's far from an afterthought, but rather a quieter element that encourages you on a path around the sphere. It's never a destination, but rather a journey, and the cane pays homage to such a consideration.



Ronnie Phillips
Bud Vase with Gold Leaf Large
(Clear)
Blown Glass
9" Orb
\$650

CASCO BAY ARTISANS

INTERNATIONAL FINE ART GALLERY



Ronnie Phillips
Bud Vase with Gold Leaf Large
(Black)
Blown Glass
9" Orb
\$650



Ronnie Phillips
Bud Vase with Gold Leaf Small
(Light Blue)
Blown Glass
5" Orb
\$275

CASCO BAY ARTISANS

INTERNATIONAL FINE ART GALLERY



Ronnie Phillips
Bud Vase with Gold Leaf Small
(Teal)
Blown Glass
5" Orb
\$275



Ronnie Phillips
Bud Vase with Gold Leaf Small
(White)
Blown Glass
5" Orb
\$275

CASCO BAY ARTISANS

INTERNATIONAL FINE ART GALLERY

Richard Satava

Richard Satava was introduced to glassblowing in 1969 while at Ocean High School in Pacifica, California. He subsequently studied art and glassblowing at the College of San Mateo and California State University, Chico. As important as the skills he learned while taking courses was the experience he received at CSU, Chico, as a technician in their glass shop.

In 1977 he established his own Northern California glass studio called Satava Art Glass, working mostly in the art nouveau style. All of these designs have evolved throughout the eighties and nineties, and continue to be created with new colors, shapes and inspiration. During most of the 1990s he started to focus more attention on ocean life. A visit to the Monterey Bay Aquarium enabled him to view Pacific Coast jellyfish in a setting much like viewing art at a gallery. He spent the next three years experimenting with various formulas to achieve the translucent colors needed to make the Moon jellyfish, which are so successful they are displayed and sold at that and other aquariums.



Richard Satava
Wisteria Vase
Blown Glass
9"x6"x6"
\$550

CASCO BAY ARTISANS

INTERNATIONAL FINE ART GALLERY



Richard Satava
Wisteria Vase (Red SM)
Blown Glass
5"x7.5"x3.5"
\$440



Richard Satava
Mt Shasta(Gold M)
Blown Glass
5"x7.5"x5"
\$660

CASCO BAY ARTISANS

INTERNATIONAL FINE ART GALLERY



Richard Satava
Mt Shasta (Gold SM)
Blown Glass
5.5"x6.5"x5.5"
\$550



Richard Satava
Nautilus (Blue/Gold)
Blown Glass
Approx 4" Round
\$250

CASCO BAY ARTISANS

INTERNATIONAL FINE ART GALLERY



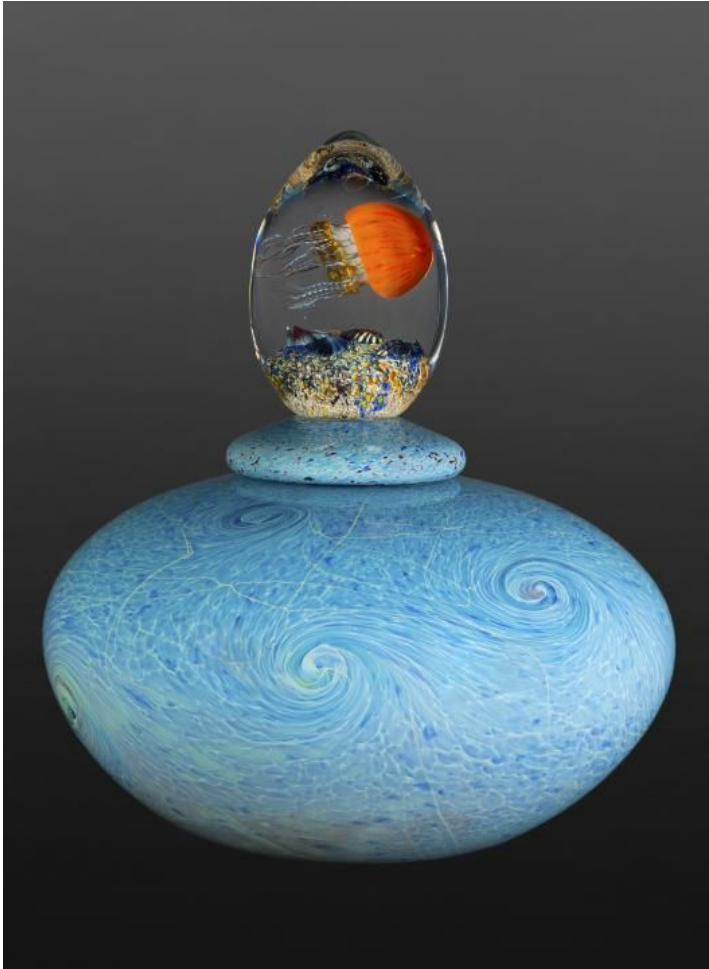
Richard Satava
Nautilus (Clear/Gold)
Blown Glass
Approx 4" Round
\$250



Richard Satava
Nautilus (Blue/Red)
Blown Glass
Approx 4" Round
\$250

CASCO BAY ARTISANS

INTERNATIONAL FINE ART GALLERY



Richard Satava
Jellyfish Oval
Blown Glass
12"x15"x12"
\$3,500

CASCO BAY ARTISANS

INTERNATIONAL FINE ART GALLERY

Seattle Glass Works

At Seattle Glassblowing Studio, it is our mission to provide an unforgettable glassblowing experience to all our visitors and deliver world class training to the next generation of glass artists. Seattle Glassblowing Studio specializes in the production of unique hand-blown and hand-sculpted glass art. We create all of our own work in our on-site Hot Shop including our studio series and custom artworks. The gallery displays a wide selection of unique pieces, from small gifts to large installations.



Seattle Glass Works
Landscape Vase
Blown Glass
8"x11"x8"
\$600



Seattle Glass Works
Incalmo Vase
Blown Glass
7.5"x9"x7.5"
\$300

CASCO BAY ARTISANS

INTERNATIONAL FINE ART GALLERY



Seattle Glass Works
River Rock Blue
Blown Glass
4"x2"x1.5"
\$60



Seattle Glass Works
River Rock Multi
Blown Glass
5"x3"x2.5"
\$150



Seattle Glass Works
Dot Bowl
Blown Glass
6"x4"x6"
\$250

CASCO BAY ARTISANS

INTERNATIONAL FINE ART GALLERY



Seattle Glass Works
Large Murini Fan (Green)
Blown Glass
19"x10"x6"
\$900



Seattle Glass Works
Large Murini Fan (Orange)
Blown Glass
19"x10"x6"
\$900



Seattle Glass Works
Large Murini Fan (Pink)
Blown Glass
19"x10"x6"
\$900

CASCO BAY ARTISANS

INTERNATIONAL FINE ART GALLERY



Seattle Glass Works
Incalmo Bowl
Blown Glass
11"x6"x11"
\$300



Seattle Glass Works
Spotted Landscape Vase (Blue)
Blown Glass
7"x10"x7"
\$600

CASCO BAY ARTISANS

INTERNATIONAL FINE ART GALLERY



Seattle Glass Works
Spotted Landscape Vase
(Orange)
Blown Glass
7"x10"x7"
\$600



Seattle Glass Works
Landscape Vase (Pink)
Blown Glass
9"x8"x6"
\$600

CASCO BAY ARTISANS

INTERNATIONAL FINE ART GALLERY



Seattle Glass Works
Large Wave
Blown Glass
6"x8"x4"
\$500



Seattle Glass Works
LG Glass Plate (Gold)
Blown Glass
18"x5"x18"
\$650

CASCO BAY ARTISANS

INTERNATIONAL FINE ART GALLERY



Seattle Glass Works
M Glass Plate (Red/Gold)
Blown Glass
16"x5"x16"
\$500



Seattle Glass Works
M Glass Plate (Red)
Blown Glass
16"x5"x16"
\$500

CASCO BAY ARTISANS

INTERNATIONAL FINE ART GALLERY



Seattle Glass Works
M Glass Plate (Red/Orange)
Blown Glass
16"x5"x16"
\$500



Seattle Glass Works
XL Glass Plate
Blown Glass
21"x5"x21"
\$800

CASCO BAY ARTISANS

INTERNATIONAL FINE ART GALLERY



Seattle Glass Works
SM Glass Plate (Red/Gold)
Blown Glass
15"x8"x15"
\$400



Seattle Glass Works
SM Glass Plate (Gold)
Blown Glass
15"x8"x15"
\$400

CASCO BAY ARTISANS

INTERNATIONAL FINE ART GALLERY

Jan Royall

Jan has been working in glass since 1973. She has studied with Stephen Horowitz in Aspen, Colorado and later, with Christie Rufo in Somerville, Massachusetts. Originally trained in lead came construction, Jan eventually began working in copper foil and continues to utilize both construction methods today, depending on the requirements of her commissions.

"I favor using mouth blown glass for its clarity and individual nuances but always use whatever glass is most effective for the design concept."



Jan Royall
Ship Compass Wheel
Stained Glass
26.5" Round
\$4,000



Jan Royall
Light Passage
Stained Glass
21"x21"
\$2750

CASCO BAY ARTISANS

INTERNATIONAL FINE ART GALLERY

Maya Travaglia

Maya Travaglia's current art medium is glass, a complicated and dynamic material that offers endless possibilities. Travaglia primarily works with hand blown glass that has been rolled into sheets. "It is pure color, very magical material the way it changes with the light conditions," said Travaglia. "I love the duality of it."

Often, Travaglia's motivation to create comes from the material itself. For instance, when heated, glass can drip and flow like honey, seemingly coming alive. For Travaglia, this vitality offers endless possibilities of color, content, and form.

With the natural world as her inspiration, Travaglia has created commissioned works of hand blown glass wall art installations, which are unique in their vibrant pattern, light, and movement. The language of art and ways of seeing as well as a commitment to community and a deep respect for nature; together represent Travaglia's foundation.



Maya Travaglia
Study II
Stained Glass
10.5"x10"
\$875



Maya Travaglia
Study I
Stained Glass
12"x10"
\$875

CASCO BAY ARTISANS

INTERNATIONAL FINE ART GALLERY

Pat Campbell

Paper is a natural choice of material for my work. It provides the translucency I am seeking in the constructions. It also provides a thin plane of material that is easily shaped and accepts the reed, wood and paper cord that I apply to it.

Paper is a fragile material. It can be easily ripped or torn. The structures that I make are quite fragile in appearance. To reinforce the fragility of the pieces, treated rice paper is effective. My work is strongly derived from the Japanese shoji screen, which is traditionally made of rice paper. The qualities of paper now available are exciting to work with; primarily, I use a very simple, thin white rice paper.



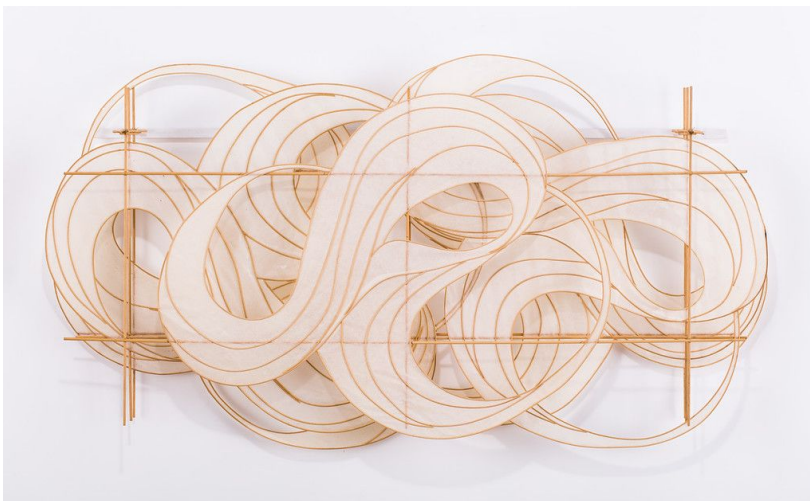
Pat Campbell
Surf Play I
Rice paper and Reed
65.55"x87"x16"
\$8000

CASCO BAY ARTISANS

INTERNATIONAL FINE ART GALLERY



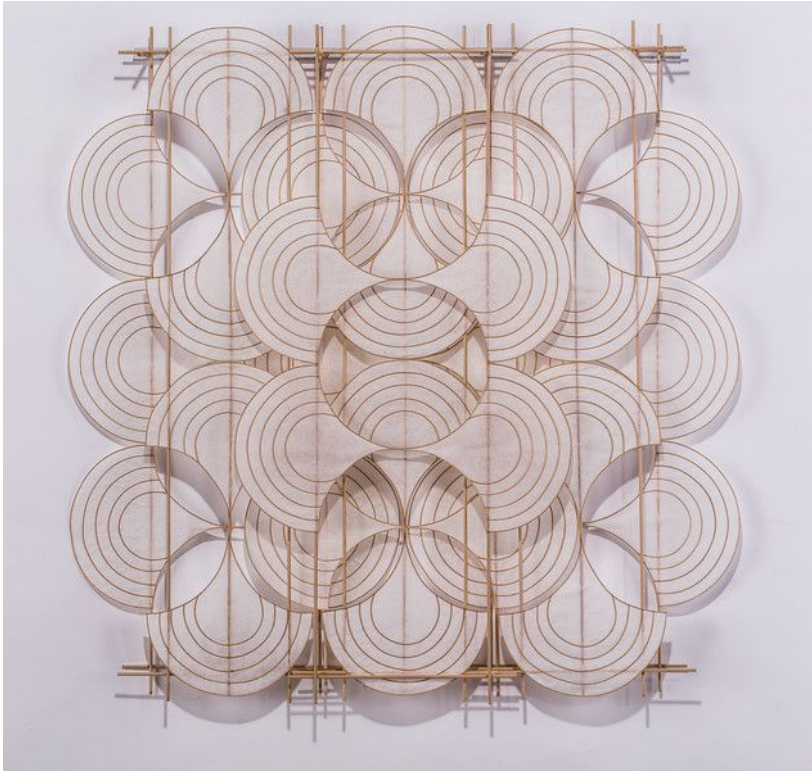
Pat Campbell
Shellaquery I
Rice Paper and Reed
9"x7"x19"
\$675



Pat Campbell
Number 4696
Rice Paper and Reed
60"x 24"x 5"
\$2,040

CASCO BAY ARTISANS

INTERNATIONAL FINE ART GALLERY



Pat Campbell
Number 5028
Rice Paper and Reed
48"x60"x5"
\$3,740

CASCO BAY ARTISANS

INTERNATIONAL FINE ART GALLERY



Pat Campbell
Number 4661
Rice Paper and Reed
24"x60"x4"
\$2,040

CASCO BAY ARTISANS

INTERNATIONAL FINE ART GALLERY



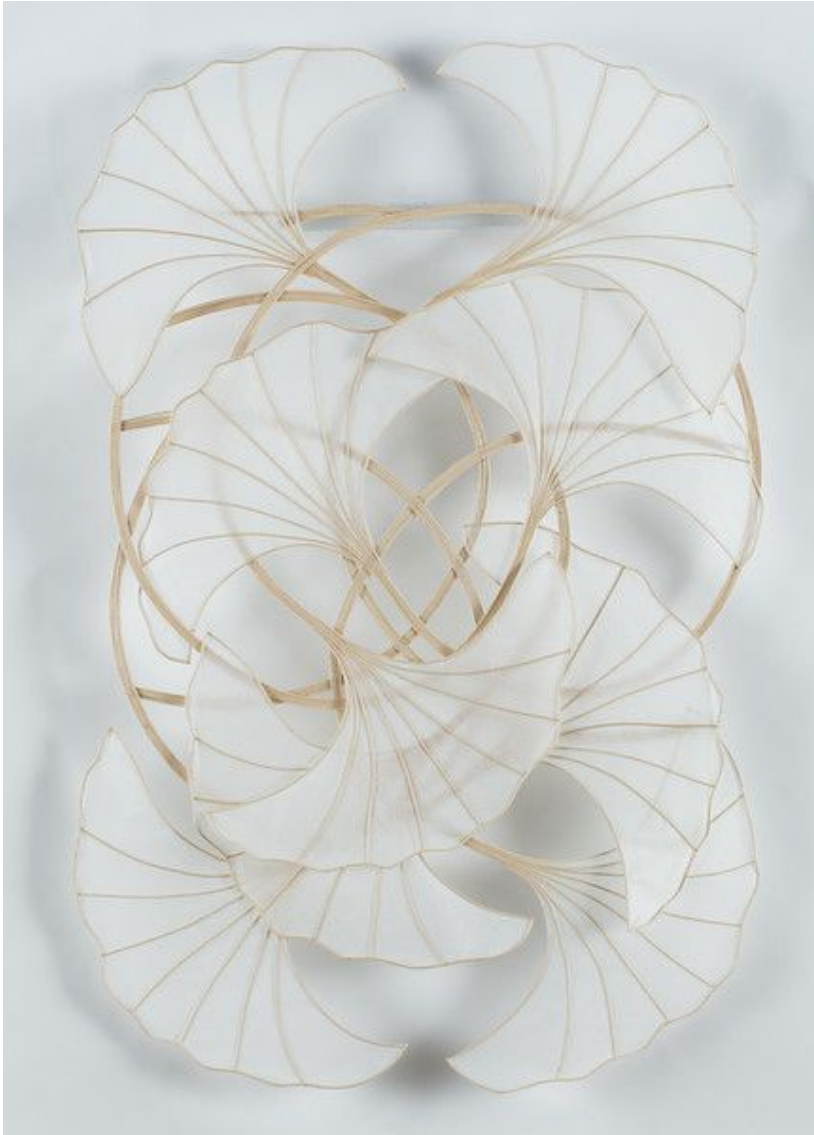
Pat Campbell
Number 4694
Rice Paper and Reed
24"x32"x4"
\$1,360



Pat Campbell
Number 4635
Rice Paper and Reed
60"x36"x4"
\$4,250

CASCO BAY ARTISANS

INTERNATIONAL FINE ART GALLERY



Pat Campbell
Number 5803
Rice Paper and Reed
24"x36"x4"
\$2,040

CASCO BAY ARTISANS

INTERNATIONAL FINE ART GALLERY

Julia Doughty

I am a scavenger and an iron hound. Since I was a child, rusty iron remnants discarded by past lives, have lured me. Old beds and cars and other rotting, wonderful iron carcasses call out to me. They are rich in history and speak of, perhaps, a more physical but simpler way of life. I love the color and texture of the rust, especially when combined with stone and wood. I love that nature has changed these objects in its process of reclaiming them. After I find these special objects, I continue their metamorphosis in my studio. Sometimes I know right away how I will incorporate them into my sculpture and sometimes they sit with me for years.

Mindful scavenging insists that I step outside of myself to immerse in and study nature. Its beauty and the patterns found in every living or dormant thing, never cease to spark within me, a deep and soulful appreciation. This solitary time feeds me with renewed passion and strength which sees me through my artistic process in the studio and thus, my journey as an artist. Each piece I create is unique. They continue to evolve alongside the artist in me. I am most passionate about my seahorse and lobster series. It amuses me that the lobster is also a scavenger.



Julia Doughty
Caught
Found Objects
\$825



Julia Doughty
Burnett Bridge Bottom Feeder
Found Objects
\$962

CASCO BAY ARTISANS

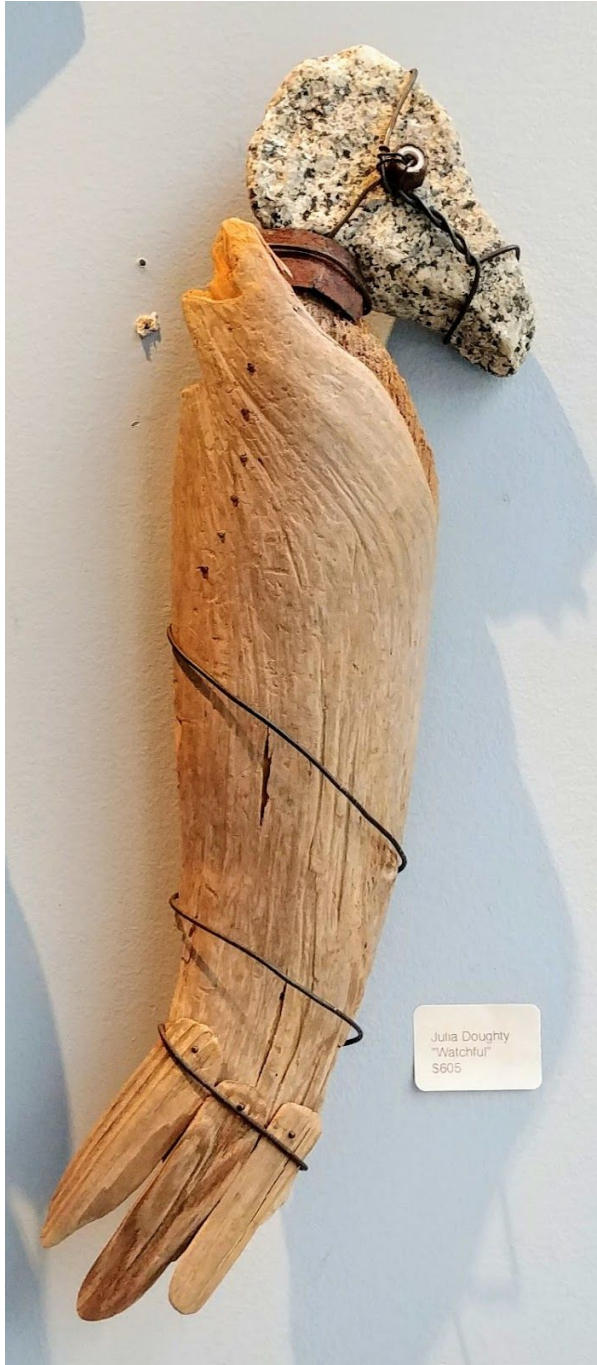
INTERNATIONAL FINE ART GALLERY



Julia Doughty
Wave Rider III
Found Objects
\$935

CASCO BAY ARTISANS

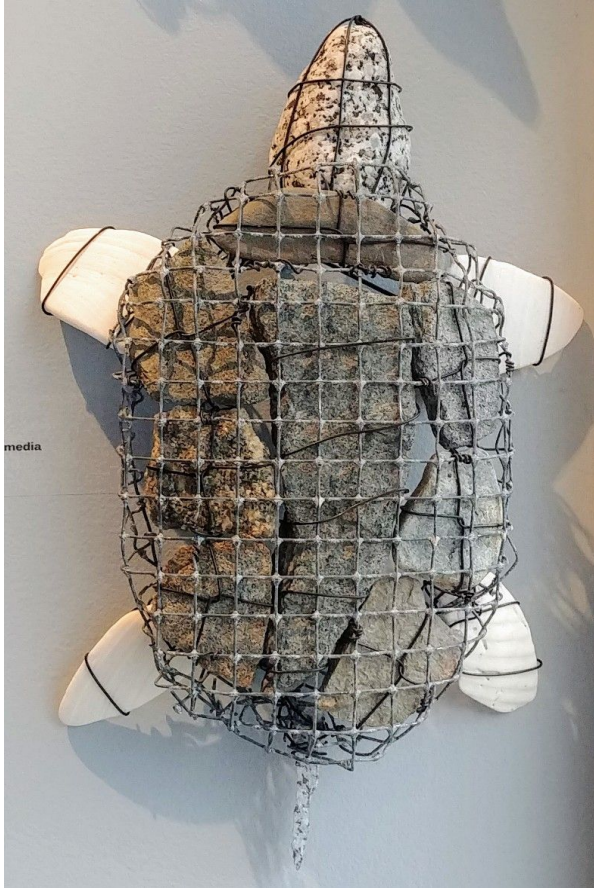
INTERNATIONAL FINE ART GALLERY



Julia Doughty
Watchful
Found Objects
\$605

CASCO BAY ARTISANS

INTERNATIONAL FINE ART GALLERY



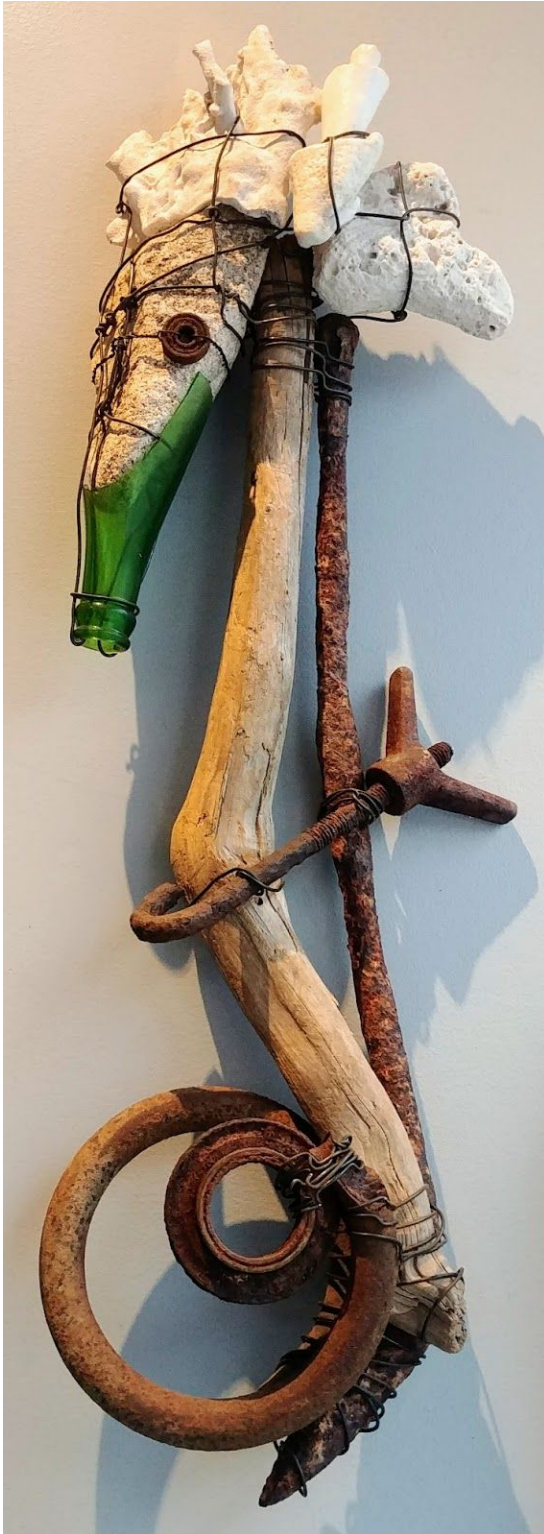
Julia Doughty
Casco
Found Objects
\$500



Julia Doughty
Crab Study II
Found Objects
\$577.50

CASCO BAY ARTISANS

INTERNATIONAL FINE ART GALLERY



Julia Doughty
Wave Rider II
Found Objects
\$970

CASCO BAY ARTISANS

INTERNATIONAL FINE ART GALLERY



Julia Doughty
Here is the Steeple
Found Objects
\$1200



Julia Doughty
Diver
Found Objects
\$875

CASCO BAY ARTISANS

INTERNATIONAL FINE ART GALLERY

Ray Gross

Ray Gross is an artist, sculptor and designer based out of South Florida. His career began after a football injury led him to an education in Fine Art at Florida Atlantic University where he fell in love with the medium of clay. Most recently, his hand-built, hand-painted hyper-realistic porcelain sculptures depicting objects of everyday Americana, including utilitarian art objects such as paint cans, tubes, brushes, pencils, and other artist tools have seized the attention of collectors, and have been installed in public and corporate spaces worldwide.



Ray Gross
Large Artist Brush (Blue Gray)
Porcelain
4"x27"x3"
\$1,800

CASCO BAY ARTISANS

INTERNATIONAL FINE ART GALLERY



Ray Gross
Small Pencil
Porcelain
0.5"x8"x0.5"
\$98

CASCO BAY ARTISANS

INTERNATIONAL FINE ART GALLERY



Ray Gross
Large Pencil
Porcelain
1.25"x15"x1.25"
\$350

CASCO BAY ARTISANS

INTERNATIONAL FINE ART GALLERY



Ray Gross
Pallet Knife
Porcelain
4"x20"x2.5"
\$1,200

CASCO BAY ARTISANS

INTERNATIONAL FINE ART GALLERY



Ray Gross
Orange Picasso 5800 Tube
Porcelain
9"x30"x7"
\$4,800

CASCO BAY ARTISANS

INTERNATIONAL FINE ART GALLERY



Ray Gross
Small Artist Brushes (Red/Black)
Porcelain
16"x2"x1"
\$98

CASCO BAY ARTISANS

INTERNATIONAL FINE ART GALLERY



Ray Gross
Large Artist Brush (Red/Blue)
Porcelain
30x3.5x2
\$1,800

CASCO BAY ARTISANS

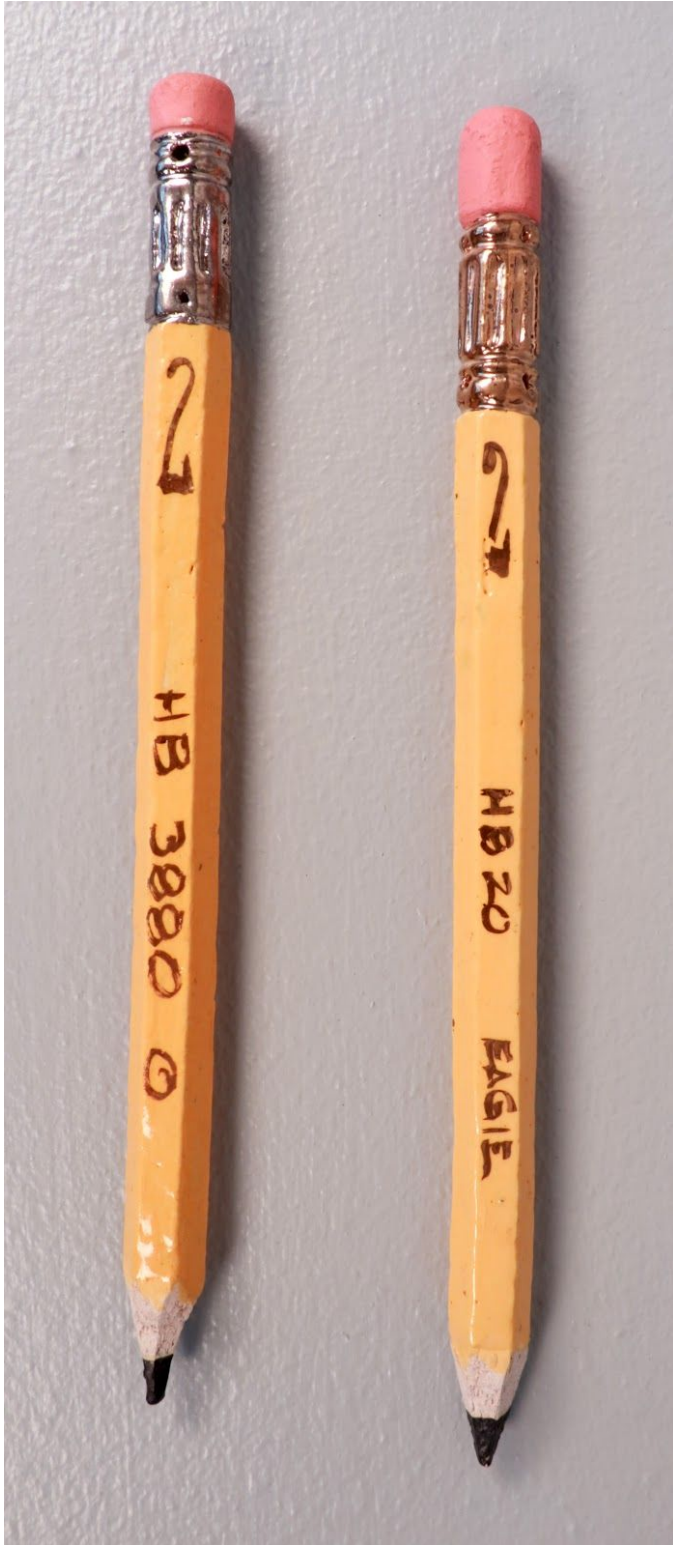
INTERNATIONAL FINE ART GALLERY



Ray Gross
Liquitex Red Tube
Porcelain
6"x26"x5"
\$3,500

CASCO BAY ARTISANS

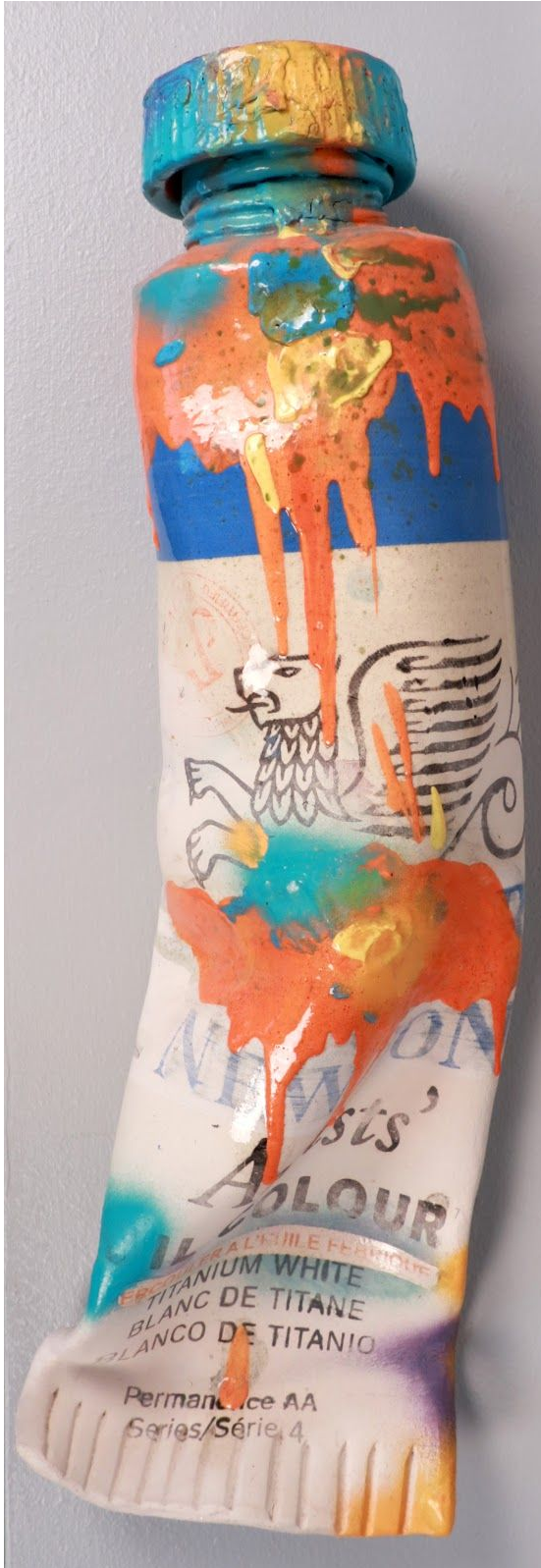
INTERNATIONAL FINE ART GALLERY



Ray Gross
Small Pencils
Porcelain
0.5"x10"x0.5"
\$98ea

CASCO BAY ARTISANS

INTERNATIONAL FINE ART GALLERY



Ray Gross
Turquoise/Orange
Windsor Newton Tube
Porcelain
6"x24"x5"
\$3,500

CASCO BAY ARTISANS

INTERNATIONAL FINE ART GALLERY



Ray Gross
Large Artist Brush (Yellow/Blue)
Porcelain
30"x3"x2"
\$1,800

CASCO BAY ARTISANS

INTERNATIONAL FINE ART GALLERY



Ray Gross
Grumbacher Yellow Tube
Porcelain
28"x8"x6"
\$3,500

CASCO BAY ARTISANS

INTERNATIONAL FINE ART GALLERY



Ray Gross
Liquitex Yellow Tube
Porcelain
24"x9"x6"
\$3,800

CASCO BAY ARTISANS

INTERNATIONAL FINE ART GALLERY



Ray Gross
Yellow Paint Can
Porcelain
6.5"x7.5"x6.5"
\$2,000

CASCO BAY ARTISANS

INTERNATIONAL FINE ART GALLERY



Ray Gross
Small Artist Brush (Coral)
Porcelain
15"x2"x1"
\$98

CASCO BAY ARTISANS

INTERNATIONAL FINE ART GALLERY

Pino Mascia



Pino Mascia
'Waterways'
Patina on Canvas
26" x 26"
\$2,400



Pino Mascia
'Water Rhythms 1'
Patina on Canvas
26" x 22"
\$2,400

CASCO BAY ARTISANS

INTERNATIONAL FINE ART GALLERY



Pino Mascia
'Water Rhythms 2'
Patina on Canvas
26" x 22"
\$2,400



Pino Mascia
'Lines 1'
Patina on Canvas
9" x 12"
\$1,100

CASCO BAY ARTISANS

INTERNATIONAL FINE ART GALLERY



Pino Mascia
'Lines 2'
Patina on Canvas
9"x12"
\$1,100



Pino Mascia
'Lines 3'
Patina on Canvas
9"x12"
SOLD

CASCO BAY ARTISANS

INTERNATIONAL FINE ART GALLERY



Pino Mascia
'Abstract 1"
Patina on Canvas
13"x17"
\$1,870



Pino Mascia
'Abstract 1"
Patina on Canvas
13"x17"
\$1,870

CASCO BAY ARTISANS

INTERNATIONAL FINE ART GALLERY



Pino Masica
Ceramic Bust (Blue Grey Matte)
Porcelain
7"x9"x7"
\$1870
Available with or without sheet
music



Pino Masica
Ceramic Bust (Blue Light Grey)
Porcelain
7"x9"x7"
\$1870
Available with or without sheet
music

CASCO BAY ARTISANS

INTERNATIONAL FINE ART GALLERY



Pino Masica
Ceramic Bust (Grey High Shine)
Porcelain
7"x9"x7"
\$1870
Available with or without sheet
music



Pino Masica
Ceramic Bust (Light Grey High
Shine)
Porcelain
7"x9"x7"
\$1870
Available with or without sheet
music

CASCO BAY ARTISANS

INTERNATIONAL FINE ART GALLERY

Andrea Mulcahy

My work illuminates an energetic state that exists yet is generally not seen, much like the etheric field. Movement as it's captured in space, on earth and within the physical body indicates pathways and energy flow. It is my interest to illustrate that flow of energy through lines in three dimensional space.

I'm intrigued by the way simple lines can become complex structures and how complex structures can be reduced to simple lines. I choose to work in steel because it gives me the most immediate connection to my thoughts and the welding process allows me to quickly execute my ideas. The stability and permanence of metal also gives me the capability to build with structural freedom. Steel rods can represent a single line allowing the negative space to become an integral part of the sculpture and the bent steel rods create a fluidity that lets one forget that the structure is made of hard steel.



Andrea Mulcahy
Converging Vortices
Powder Coated Steel
47"x38"x20"
\$4620

CASCO BAY ARTISANS

INTERNATIONAL FINE ART GALLERY



Andrea Mulcahy
Time in Space
Powder Coated Steel
34"x32"x30"
\$5500



Andrea Mulcahy
Eye of the Spider
Powder Coated Steel
27"x28"x25"
\$3300

CASCO BAY ARTISANS

INTERNATIONAL FINE ART GALLERY



Andrea Mulcahy
Silver Nest
Powder Coated Steel
21"x11"x22"
\$3300



Andrea Mulcahy
Rising Haze
Powder Coated Steel
27"x25"x23"
\$3200



Andrea Mulcahy
Splay
Powder Coated Steel
10"x24"x21"
\$1870

CASCO BAY ARTISANS

INTERNATIONAL FINE ART GALLERY



Andrea Mulcahy
Current
Powder Coated Steel
7"x26"x20"
\$2200



Andrea Mulcahy
Waves
Powder Coated Steel
29"x47"x20"
\$3520



Andrea Mulcahy
Source
Powder Coated Steel
40"x31"x38"
\$3960

CASCO BAY ARTISANS

INTERNATIONAL FINE ART GALLERY



Andrea Mulcahy
Vortex
Powder Coated Steel
13"x12"x12"
\$1980